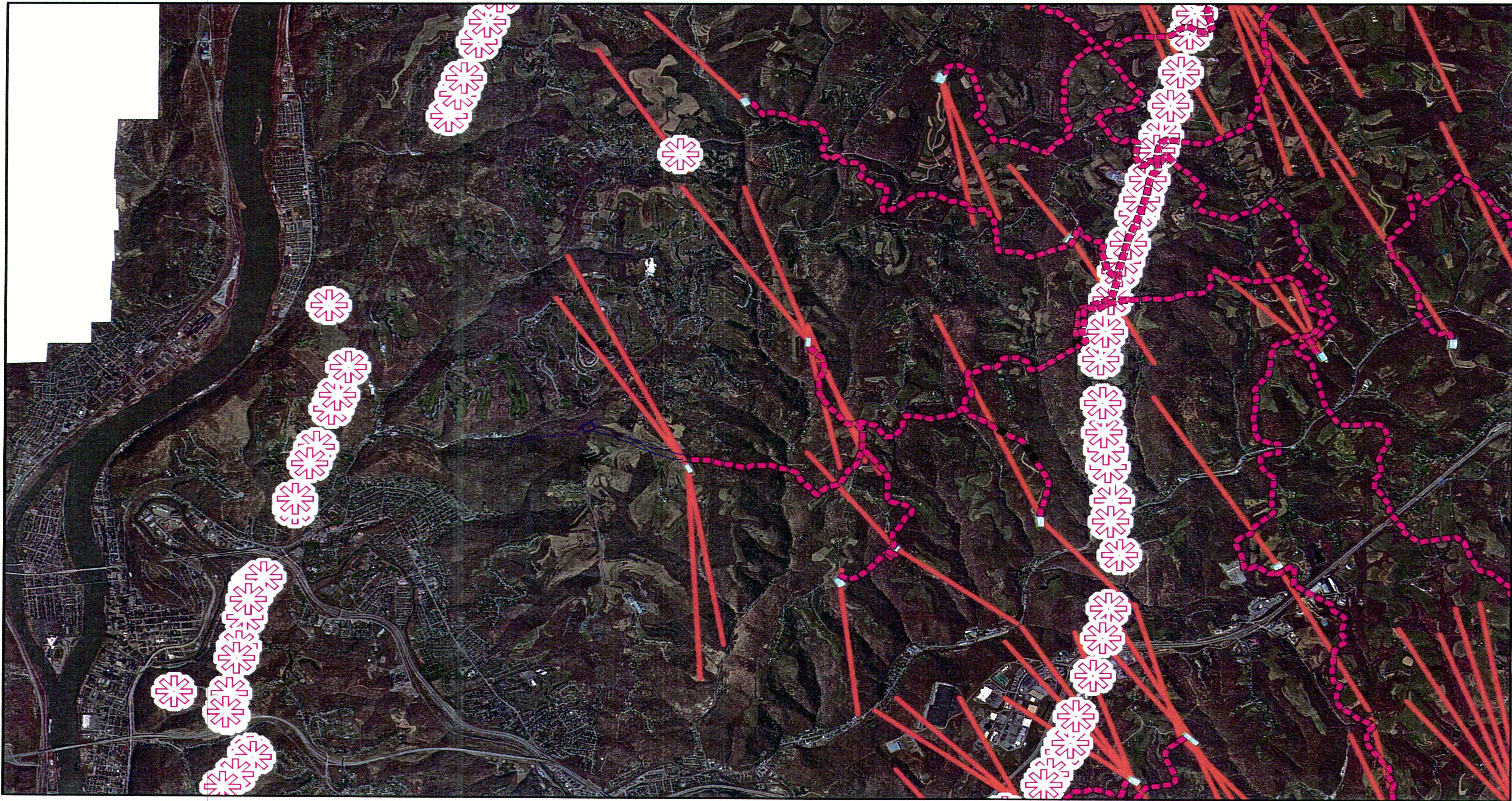
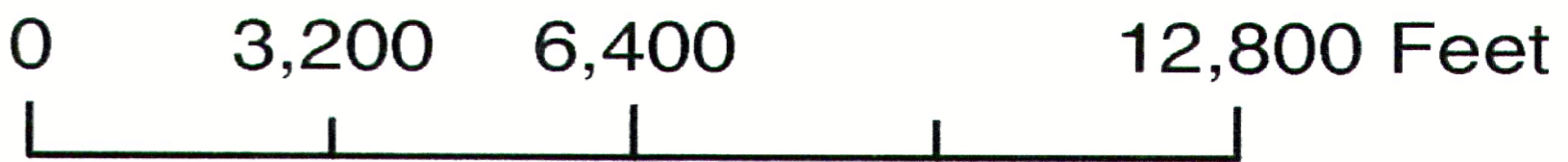


Ohio County, West Virginia



Bonne Taylor, GIS Technician
Winter 2017
304-234-3608
ohiocountygis@yahoo.com
ohio.wvassessor.com

Tiffany Hoffman, Assessor



This map has been generated by the Ohio County Assessor's Office for informational purposes only. All information displayed on this map was derived from official State, County and Municipal records. This is not a plat map, nor does it represent the official survey of the land. Ohio County is not responsible for any errors or omissions associated with this map. Any and all property boundaries, easements, right-of-ways, parcel identification numbers, acreage calculations, measurements, bearings, distances, property owner names, aerial photographs or other map features are subject to change. Please refer to the official deeds and recorded plats for actual legal descriptions, property boundaries and other information. All finished tax maps created under the provisions of legislation are the property of the Ohio County Assessor's Office and the reproduction, copying, distribution, sale or lease of such tax maps, or copies thereof, without the written permission of the Ohio County Assessor is prohibited by law.